

## Case 5

### Case 5

- 65 year female left breast mass.

## Stromal increased cellularity

- Spindle cell carcinoma
- Phyllodes Tumors
- Sarcomas (mets, DFSP etc)
  
- Myofibroblastoma
  
- Fibromatosis
- Others – uncertain

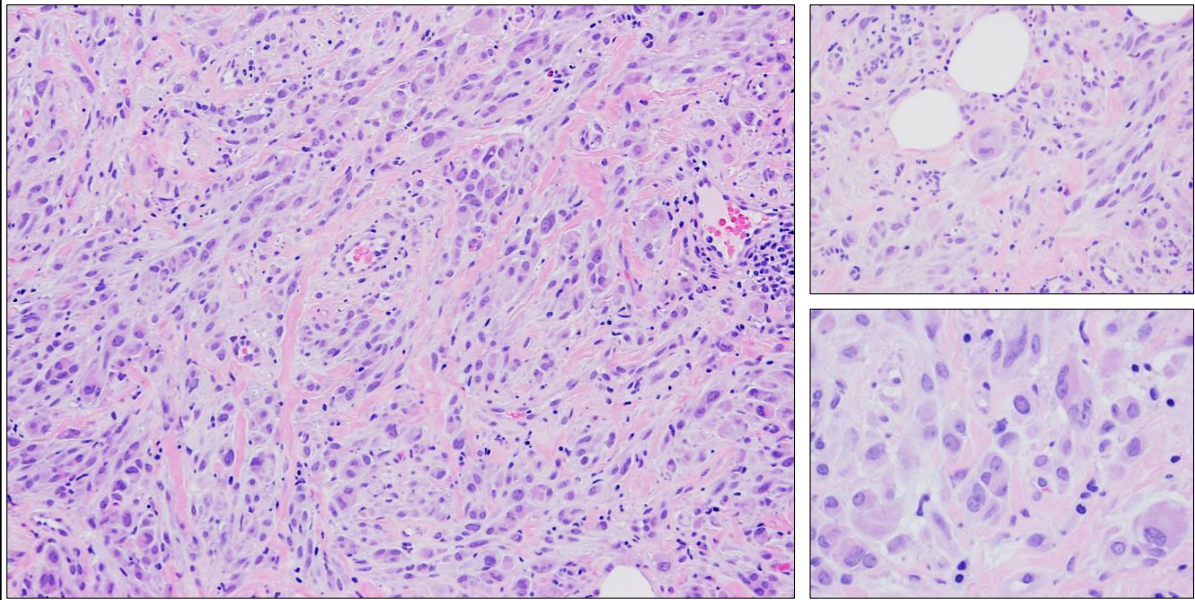
2011



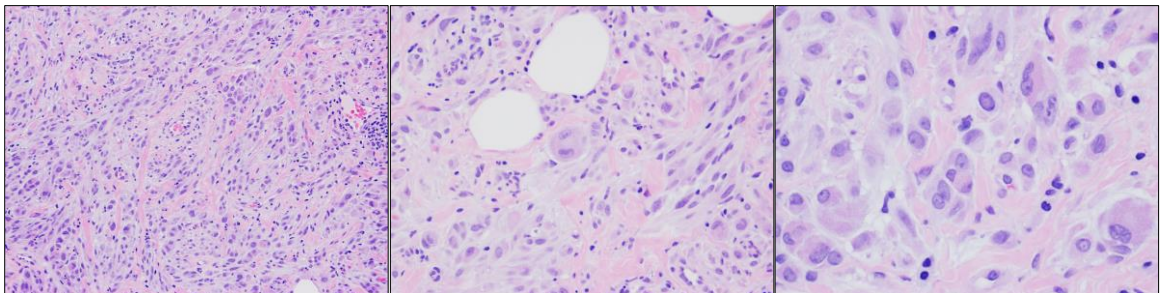
2008



Left breast mass had increased in size from 2008.



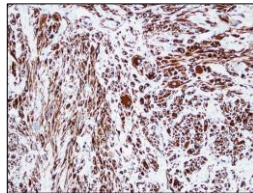
# Epithelioid Myofibroblastoma



AE1/3

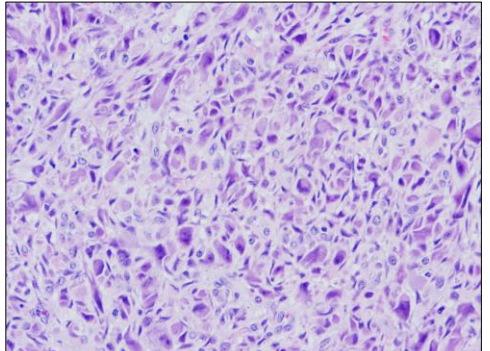
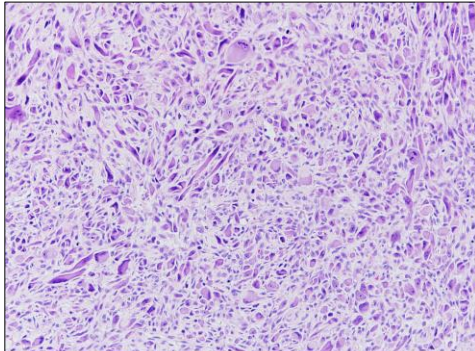
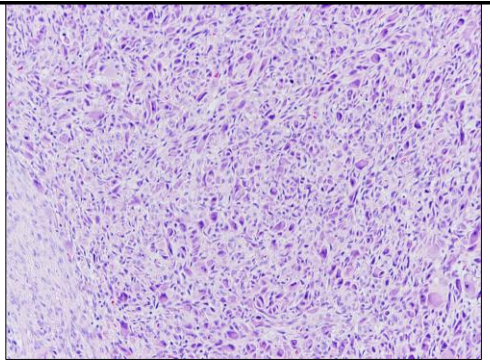
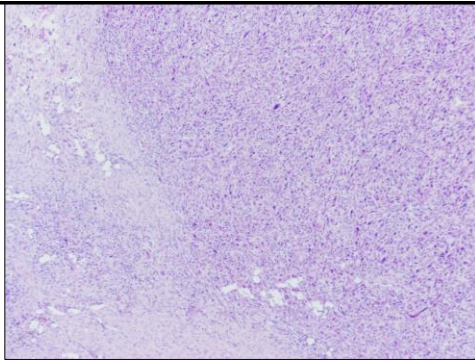


Desmin

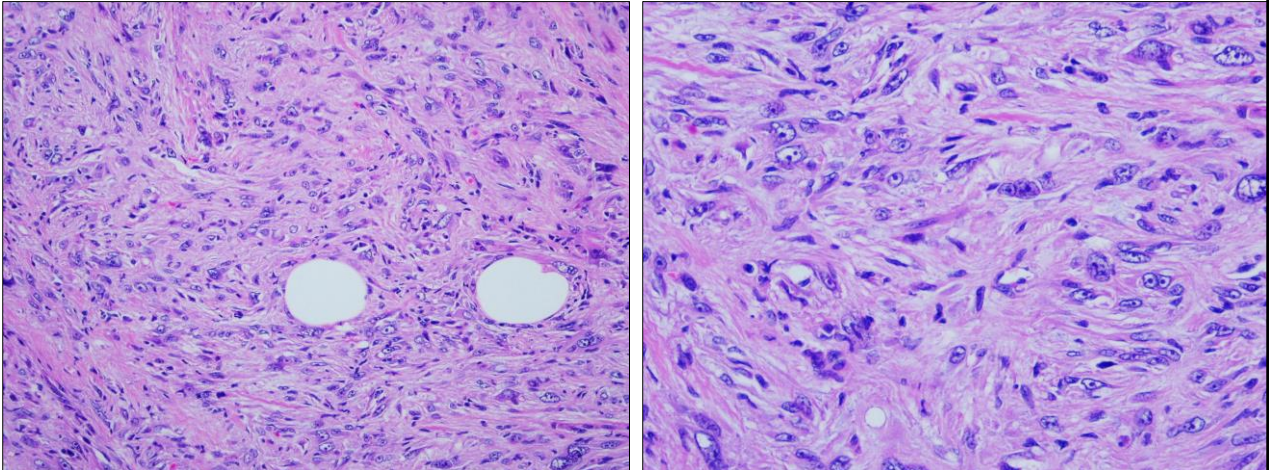


# Differential Diagnosis

? Proliferative Fasciitis like

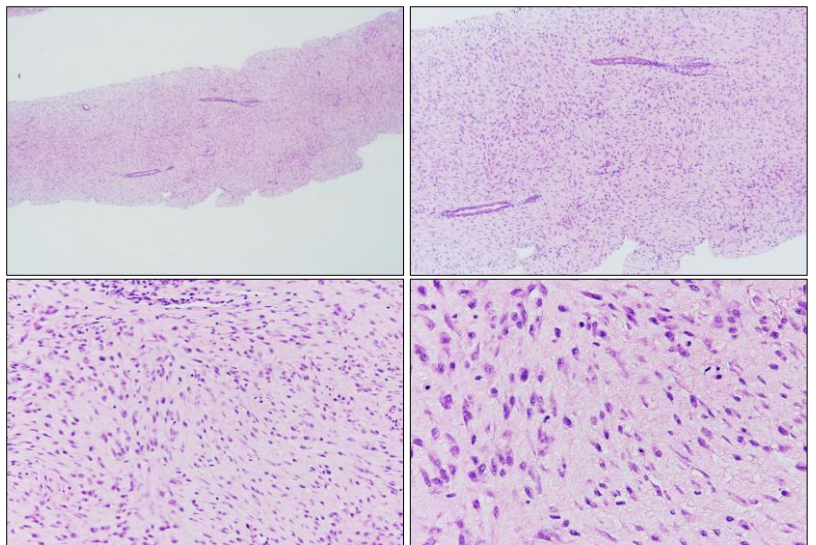


## Spindle cell carcinoma

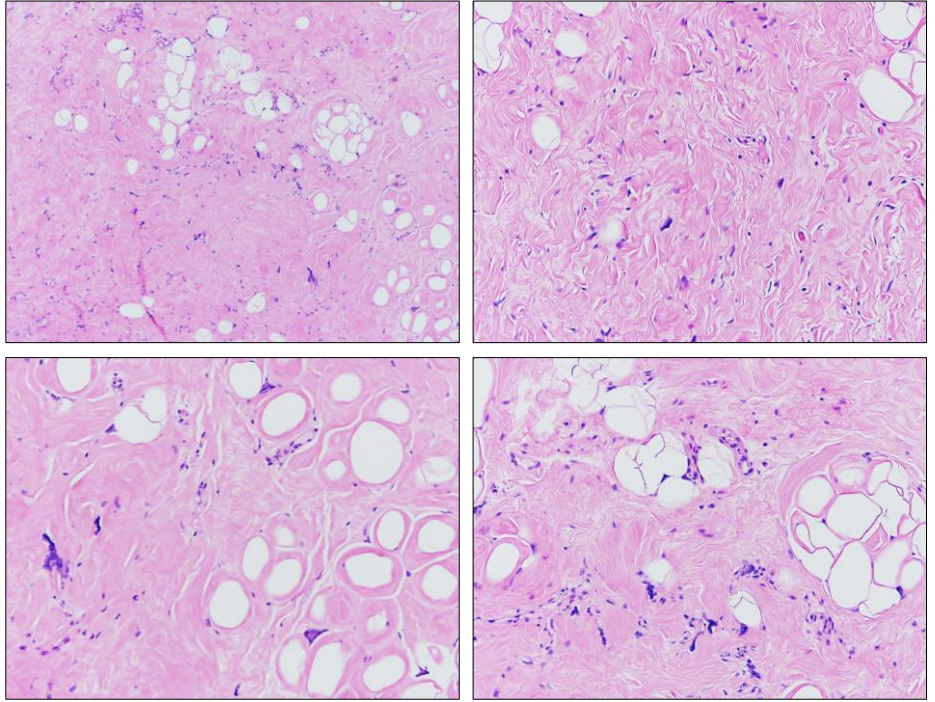


## Fibromatosis

- Bland cytology
- May or may not be fasciculated
- Beta catenin positivity



Uncertain  
nature



## Myofibroblastoma

- Benign lesions that mimic a lot of tumors
- Fibrous
- Leiomyomatous
- Epithelioid – (d/d ILC)
- Myxoid
- Phyllodes tumor

Entrapped glands

