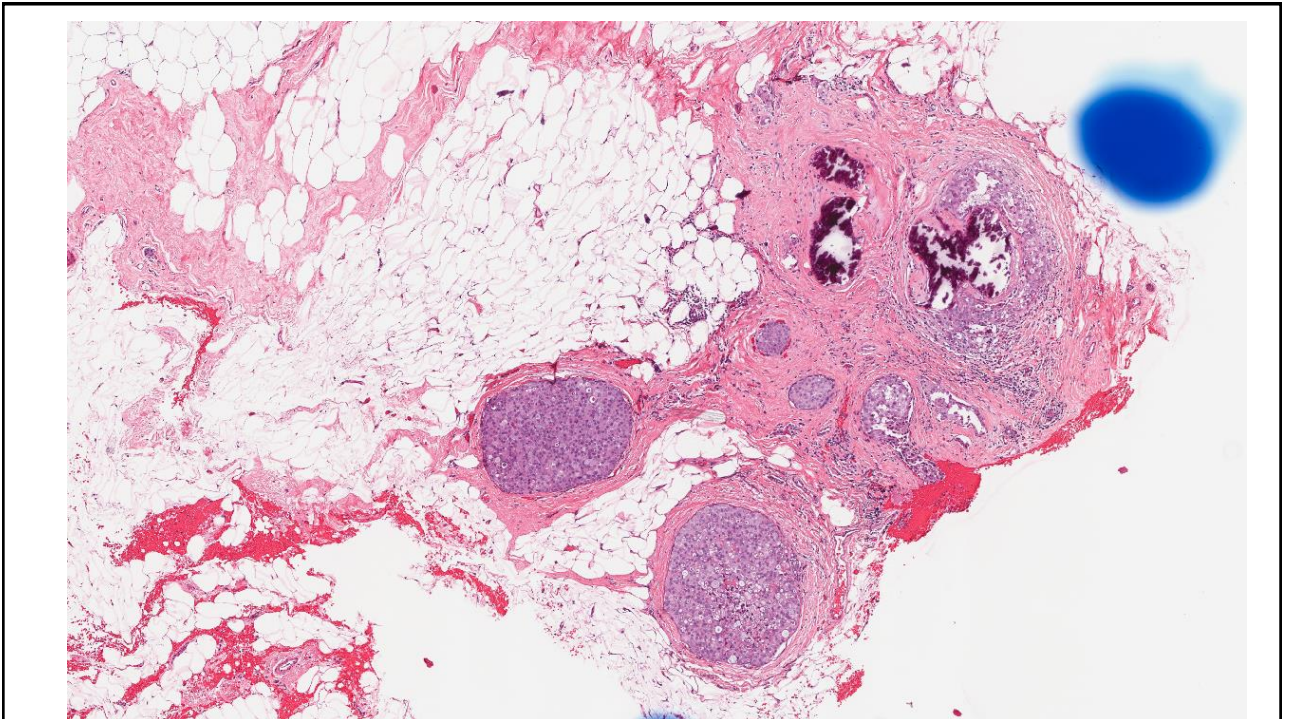


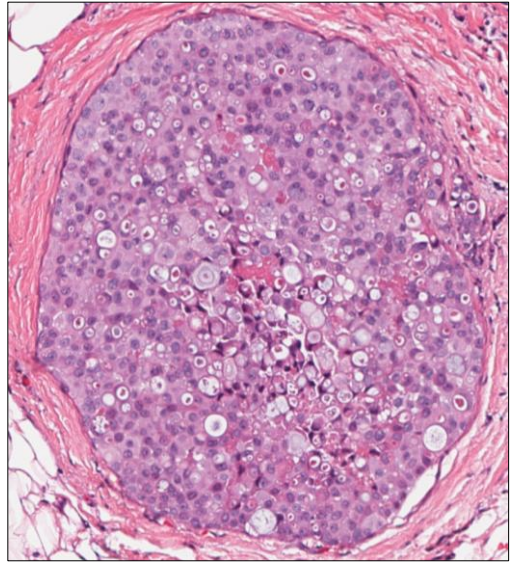
# Case 8

57 year old female with microcalcifications

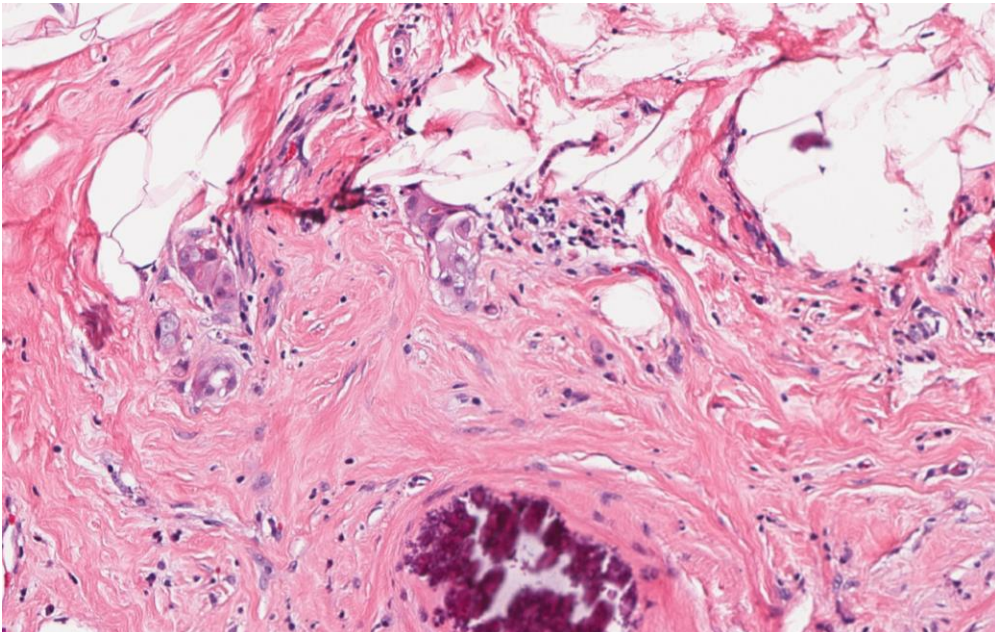


## Issues with Pleomorphic LCIS

- How to define this entity
- Consistency of definition
- Significance of definition
- Treatment?



## Focus of microinvasion

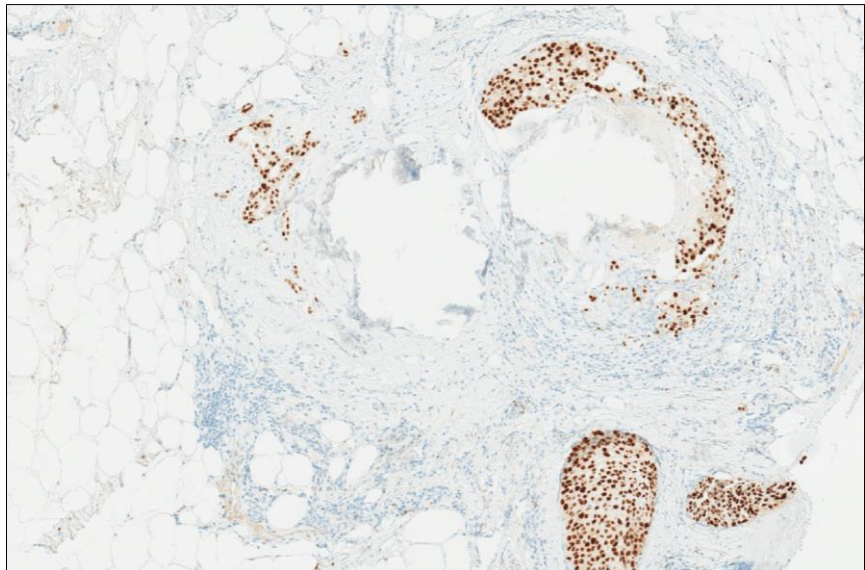


## Diagnosis

- Micro-invasive Carcinoma
- Pleomorphic lobular carcinoma
  - E-cadherin negative
  - Calcifications present

## Routine IHC tests

- ER/ PR
- HER2
- KI67 (?)



## LCIS and ?

- Calcifications
  - Unusual for LCIS to calcify – why don't know?
  - Find and treat the cause of calcifications
- Margins
  - Conventional LCIS is managed conservatively
    - Does one worry about pLCIS at margins

## Take home messages

- pLCIS
  - Calcifications may be present
  - Management is uncertain
- Beware of invasive disease
- Still a lot that we don't know about pLCIS